

WIFI Digital Heating Thermostat User Manual



User Manual

Many thanks for your selection of our products and services, and also for your trust and support to us.

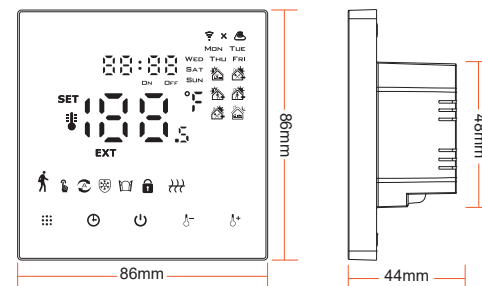
Features

- (A) Including built-in sensor and external sensor
- (B) 0.5°C accuracy keeps temperature within the level you set.
- (C) Children lock to prevent misoperation by children
- (D) Data memory when power is off.
- (E) Holiday mode make you enjoy more comfortable temperature in holiday
- (F) The temperature of external sensor can be checked

Product Specifications

Power: 90-240Vac 50/60Hz
 Range of temperature display: 1~70°C
 Display accuracy: 0.5°C
 Insulating condition: Normal environment
 Probe sensor: NTC(10k)1%
 Running program: Set per 1 week as a cycle
 Contact capacity: 3A/(WW);16A/(WE)
 Output: Switch relay
 Limit temperature range: 1~70°C
 Installation: recessed type (in the wall)
 Range of temperature adjustment: 5~35°C
 Size(mm): 86*86*10

Displays



Description of icon

- Manual mode
- Clock
- Programming mode
- Temporary manual mode
- Holiday mode, Holiday days and temperature can be set to run in count down mode
- Heating, icon disappears to stop heating
- External NTC sensor
- WIFI connection, flashing EZ distribution mode
- Child lock
- Wifi status: Disconnection
- Cloud icon: flashing AP distribution network mode
- Activate window function
- Room temp
- Setting temp
- Cooling mode, the icon blinking means cooling mode output

Operation key

NO	symbols	represent
A		Turn ON/OFF: Short press to turn on/ turn off
B		1 Short press to switch automatic mode and manual mode 2 Turn on thermostat, long press for 3-5 seconds to enter into programmable setting 3. Turn off thermostat, long press for 3-5 seconds to enter into advanced option A
C		1 Confirm key: use it with key 2 Only short press it to set time 3 Turn on thermostat, long press it for 3-5 seconds to holiday mode setting. Appear OFF, press or change to ON, then press to confirm opening holiday mode 4 Turn off thermostat ,long press it for 3-5s to enter into advanced option B
D		1 Decrease key 2 Long press to lock /unlock
E		1 Increase key ; 2 Long press to inquire external sensor temperature (only available for BN item select N3 in the advance option B) 3 In the program model, press or enter to temporary manual mode

Programmable

5+2 (factory default), 6+1 and 7 models 6 times period setting for user choose. In the advanced options choose model of you need, under power on state, long press for 3-5 seconds enter into programming mode setting, then short press choose: hour, minute, time period, and press and to adjust data, finished setting, about 10 seconds will automatic save and exist.

Wake up	Leave home	Back home	Leave home	Back home	Sleep
6: 00 20°C	8: 00 15°C	11: 30 15°C	13: 30 15°C	17: 00 15°C	22: 00 15°C

Advanced option A

Power off state, long press for 3-5 seconds to access advanced option A. From A1 to AF, short press to choose the option, and adjust data by or , short press to switch next option. Remain about 5 seconds after finish setting will quit setting.

NO	Setting Options	Data Setting Function	Factory Default
A1	Measure Temperature Calibration	-9~+9°C (Displayed as the corrected room temperature value)	-1
A2	Start/stop working temperature difference setting	0.5-2.5°C	1°C

A3	Children lock setting	0: half lock 1: full lock	0
A4	Power on/off state memory after electricity cut	0: Thermostat on/off with memory when electrify 1: Thermostat off when electrify 2: Thermostat on when electrify	0
A5	Standby bright	0: Off 1: Weakly bright 2: Brighter	2
A6	Weekly programming selection	0: 5+2 1: 6+1 2: 7	0
A7	Setting temperature minimum limit	1-10°C	5°C
A8	Setting temperature maximum limit	20-70°C	35°C
A9	Low temperature protection	1-10°C When setting temp = 10°C, if press will display , cancel low temperature protection	5°C
AA	High temperature protection for external sensor	20°C-70°C When setting temp = 20°C, if press will display , cancel high temperature protection	45°C

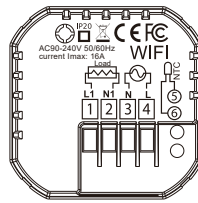
AB	High temperature protection temperature difference setting	1-9°C	2°C
AC	Window function triggers temperature	5-25°C When setting temp =5 C, if press will display [-] , cancel high window function	
AD	Window function running time	5-60min	10
AE	Restore factory defaults (Advanced Option A)	Display Ao , long press key to whole icon show	
AF	Heating/Cooling mode	0: heating 1: cooling	0

Advanced option B

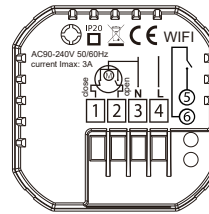
Power off state, long press for 3-5 seconds to access advanced option B. short press to choose the option, and adjust data by or , short press to switch next option. Remain about 5 seconds after finish setting will quit setting.

NO	Setting Options	Data Setting Function	Factory Default
BN	Options of sensor control	N1:Internal sensor (high temperature protection close) N2:External sensor (high temperature protection close) N3:Internal sensor control temperature ,external sensor limit temperature (external sensor detect the temperature is higher than highest temperature of external sensor, thermostat will Close relay,turn off load)	N1
BC	Descaling function	0: Disable descaling function 1: Enable descaling function	0
Bo	product information	Can't be changed	

Wiring Diagram



Electric heating wiring diagram



Water heating and gas wall-hung boiler heating

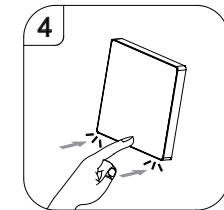
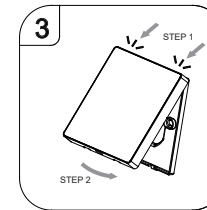
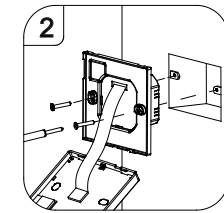
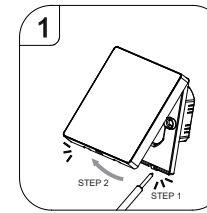
Return difference: limit valve of external sensor is 45 C for factory default (AA),value of external sensor control return difference (AB) is 2. when temperature rise to 45 C,then relay stop working and will remind high temperature production alarm. If temperature decline to 43 C relay continue to work and heating alarm will be relieved, (it can be operated ,only when room temperature is lower than setting temperature).

Sensor fault display:please choose correct working way of built-in and external sensor, if choose wrongly or sensor fault (breakdown), "E1" or "E2" will be displayed on the screen. Thermostat will stop heating until the fault is eliminated

Warranty:

We offer the warranty of 24 months, from the sales day. The products of our company can have lifetime warranty, if it is not the quality problems, or beyond the warranty period, we will charge for the after-sales service.

Installation diagram:



Wifi Thermostat Mobile App Programming Guide

Preparation required for Wifi Connection:

You will need a 4G mobile phone and wireless router. Connect the wireless router to the mobile phone and record the WIFI password .

Step 1 Download your app

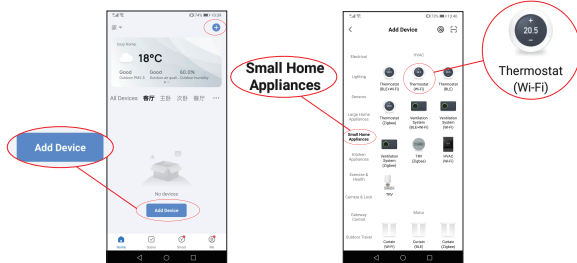


Download 'Smart Life' or 'Smart RM' app from Google play and app store. Turn on the thermostat, press and hold the key combination and to activate WIFI

distribution network icon, and are blinking together

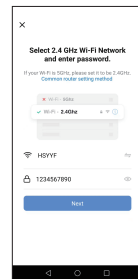
Step 2 Register your account

Step 3 Connect your Wi-Fi signal (EZ distribution mode)



1.Add Device or '+'.1.

2.Select small appliance - WIFI thermostat



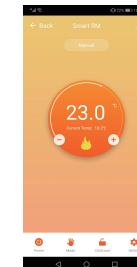
3.Select WIFI Network and enter password



4.Confirm thermostat WIFI icon blinking



5.Connecting Device



6.Connected

Additional Functions

Holiday Mode: You can program the thermostat to be on for a set temperature for up to 30 days so that there is background heat in the house while you are away. This can be found under the mode section. You have the option to set the number of days between 1-30 and a temperature up to 27 C .

Lock Mode: This option allows you to remotely lock the thermostat so no changes can be made. This can be done by clicking the symbol. To unlock click the symbol again.

Grouping devices: You can link multiple thermostats together as a group and control them all simultaneously. This can be done by clicking on the in the top right corner and then clicking the Create Group option. If you have multiple thermostats linked it will allow you to tick each one that you want to be in the group and once you confirm the selection you will be able to name the group.

Sensor type and temperature limit

Click the Sensor type option and enter password (normally 123456). Then you will be given 3 options:

(1) "Single built-in sensor" will only use the internal air sensor (DO NOT USE THIS SETTING*)

(2) "Single external sensor" will only use the floor probe (ideal for bathrooms where thermostat installed outside room).

(3) "Internal and external sensors" will use both sensors to read the temperature (Most common option).

Once you have chosen the sensor type, check that "Set temp. max" option is set to a suitable temperature for your flooring (typically 45 C)

*A floor probe must always be used with electric underfloor heating to protect the flooring.