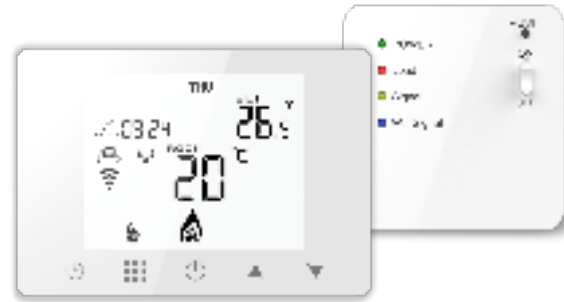


RF WIFI Wireless Thermostat User Manual



User Manual

Read this manual thoroughly before using and save it for future reference

Features

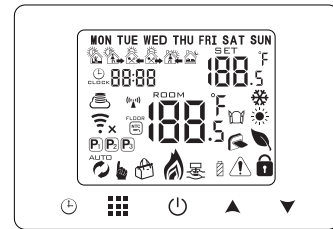
- (A) Including built-in sensor and external sensor
- (B) 0.5°C accuracy keeps temperature within the level you set.
- (C) Children lock to prevent misoperation by children
- (D) Data memory when power is off.
- (E) Holiday mode make you enjoy more comfortable temperature in holiday
- (F) The temperature of external sensor can be checked

Technical Data

Power: Receiver: 230Vac 50/60HZ Thermostat: USB power supply/4*AAA Batteries
! Pls remove batteries when USB power is working.
 Display accuracy: 0.5°C
 Insulating condition: Normal environment
 Probe sensor: NTC(10k)1%
 Running program: Set per 1 week as a cycle
 Contact capacity: 5A/250V(WV);16A/250V(WE)
 Output: Switch relay
 Working environment temperature: 0-70°C
 Installation: Wall mounted or on battery seat
 Range of temperature adjustment: 5-35°C
 Size(mm): 130*90*25

1

Displays



Home Screen

- Program mode;run preset program
- Temporary manual mode
- Holiday mode, Holiday days and temperature can be set to run in countdown mode
- External NTC sensor
- Low power
- WiFi connection, flashing EZ distribution mode
- Cloud icon: flashing AP distribution network mode
- RF communication icon: It is always on display when it is normal, and it means communication is abnormal when it is flashing
- Cooling mode, this icon is always displayed when switching to cooling mode and flashes when the cooling load is output
- Heating, icon disappears to stop heating
- Manual mode
- Clock
- Child lock
- WiFi status: Disconnection

2

Quick Operation

NO	Icon	Description
A		Turn ON/OFF
B		1 Short press to switch programmable mode and manual mode 2 Power on state, long press for 3-5 seconds to do programmable setting 3 Power off state, long press for 3-5 seconds to do advanced option A
C		1 Confirm key 2 Power off state, long press for 3-5 seconds to do advanced option B 3 Power on state, long press for 3-5 seconds to setting, short press choose holiday mode, then "OFF" will flashing, press or change to "ON", short (with holiday days and holiday temp, then press activate holiday mode.
D		1 Decrease key 2 Long press to lock /unlock
E		1 Increase key 2 Programmable mode state, press or to enter into temporary manual mode 3 Long press to check external sensor temperature (only used for the receiver with external sensor)

3

Time Setting

Power on state, press to set minute. Second press to set hour. Third press to set week. Press or to change value. Press again to confirm.

Holiday Mode Setting

Power on state, long press for 3-5 seconds to setting, short press choose holiday mode, then "OFF" will flashing, press or change to "ON", short switch holiday days and holiday temp, then press activate holiday mode.

Programmable Mode Setting

6 times period setting: 5+2 days(factory default),6+1 days, 7 days
 Turn on thermostat, long press 3-5 seconds to do Program Mode Setting . Short press to switch and confirm. Press and to adjust value.After finish setting , stand for about 10 seconds ,it will save setting then exit .

Wake up	Out door	Back home	Out door	Back home	Sleep
6: 00 20°C	8: 00 15°C	11: 30 15°C	13: 30 15°C	17: 00 15°C	22: 00 15°C

Advanced option A

Power off state, long press for 3-5 seconds to do advanced setting. Short press to switch and confirm. Press and to adjust options. After finish setting , stand for about 10 seconds ,it will save setting then exit.

NO	Setting Options	Data Setting Function	Factory Default
A1	Temp Calibration	-9~+9°C (Displayed as the corrected room temperature value)	-1°C
A2	Start/stop working temperature difference setting	0.5-2.5°C	1°C
A3	Children Lock	0:half lock 1:full lock	0

4

A4	Power on/off state memory after electricity cut	0:Thermostat on/off with memory whenelectrify 1:Thermostat off when electrify 2:Thermostat on when electrify	0
A5	Program mode type	0: 5+2 days 1: 6+1 days 2: 7 days(same)	0
A6	Setting temperature minimum limit	1-10°C	5°C
A7	Setting temperature maximum limit	20-70°C	35°C
A8	Low temperature protection	1-10°C When setting temp = 10°C, if press will display , cancel low temperature protection	5°C
A9	High temperature protection for external sensor	20°C-70°C 1.When setting temp = 20°C, if press will display , cancel high temperature protection	45°C
AA	High temperature protection temperature difference setting	1-9°C	2°C
AB	Window function triggers temperature	5-25°C,setting temperature is 5°C,decrease it, will display , then canceled this function	--

5

AC	Window function running time	5-60min	15
AD	Factory defaults	Display Ao, long press until show the whole screen	
AE	Mode select	0:Heating 1:Cooling	0

Advanced Option B

Power off state, long press for 3-5 seconds to access advanced option B. short press to choose the option, and adjust data by or ,Rmain about 5 seconds after finish setting will quit setting.

NO	Setting Options	Data Setting Function	Factory Default
B1	IP address high setting	00-FF	00
B2	IP address low setting	01-FF	01
B3	Thermostat and receiver paired	Within 10 seconds after the receiver connection (the orange LED is always on), then continuously clicking the "" button of the thermostat, the thermostat will send the IP to the receiver, display"55" means IP match successfully.	00
B4	Sensor type	N1:single built-in sensor N3:both built-in sensor and external sensor.	N1
B5	Minute interval of RF transmission	0-30 minutes	00
B6	Second interval of RF transmission	3-30 seconds	06

6

Considering battery usage, RF data updates every 20 minutes. If you wanna shorten interval, pls use USB power and remove batteries. Follow B05, B06 operation.

Return difference : limit valve of external sensor is 45°C for factory default (A9),value of external sensor control return difference (AA) is 2. when temperature rise to 45°C, then relay stop working and will remind high temperature production alarm. If temperature decline to 43°C relay continue to work and heating alarm will be relieved. (it can be operated ,only when room temperature is lower than setting temperature)
Sensor fault display:please choose correct working way of sensor type, if choose wrongly or sensor fault (breakdown), "E1" or "E2" will be displayed on the screen. Thermostat will stop heating until the fault is eliminated

Description of thermostat data communication:

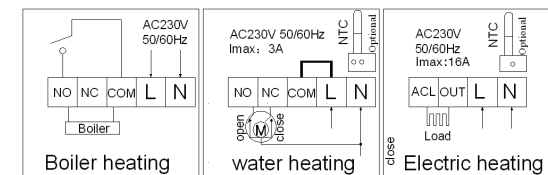
1. On/off will communicate with the receiver once time
2. When the output status is switched, it will communicate with the receiver once.
- *4: It is always on when wireless communication is normal, and it flashes when wireless communication is abnormal.

7

Receiver Indicator Light
Power indicator (green): Power on receiver, green light always on; turn off receiver, the green light is on for 1 second and off for 1 second.
RF signal indicator (orange): It is always on within 10 seconds after power-on (At this time, you can send the IP address of the thermostat to the receiver to complete the pairing; refer to the advanced option B3). After the pairing is successful, the signal light will be off; or if no pairing is performed within 10 seconds it will automatically turn off; when it is working normally, the light will flash when it receives a wireless signal.
Load/fault indicator (red): In normal operation, the load output is turned on, the light is on, and the load output is off, and the light is off; when there is a fault, it blinks and the alarm is indicated as follows:
 1. The thermostat and the receiver are not paired: flashes 2 times (quick flashes), and the interval is off for 2 seconds
 2. Loss of wireless signal (no data communication in 1 hour): flashes 3 times (quick flashes), with an interval of 2 seconds off
 3. External sensor alarm: flashes 4 times (quick flashes), with an interval of 2 seconds off(only valid when the sensor type is selected as N3 in the advanced options of the thermostat)
WiFi signal indicator (blue): When WiFi data is received, it will flash once; continuous fast flashing means it is in WiFi EZ network configuration mode; continuous slow flashing means it is in WiFi AP network configuration mode; it will always be when the network is successfully configured. On; when the WiFi is abnormal, it will flash twice quickly, and the interval will be off for 2 seconds.

8

Wiring Diagram

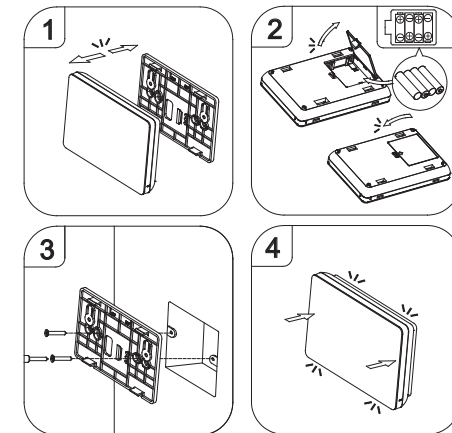


RISK OF ELECTRICAL SHOCK

Please arrange professional technician to install the product according to drawings and instructions.
 Disconnect power supply before making any connection. Contact with components carrying hazardous voltage can cause electrical shock.

9

Installation diagram:



10

Wifi Thermostat Mobile App Programming Guide

Preparation required for Wifi Connection:

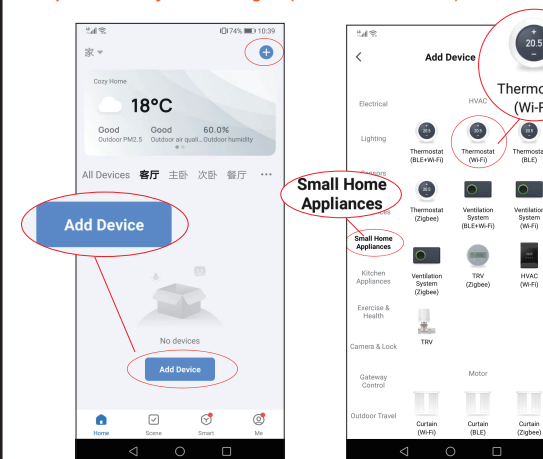
You will need a 4G mobile phone and wireless router. Connect the wireless router to the mobile phone and record the WiFi password .
Step 1 Download your app



- Choose one WiFi matching method of following 2:
- WiFi matching on thermostat: connect to voltage and turn on thermostat, long press + for 3-5 seconds to activate WiFi icon blinking.
- WiFi matching on receiver: connect to voltage and turn on receiver, long press receiver "push" button to match WiFi, when flashes quickly blue light is EZ matching mode; when flashing slowly blue light is AP matching mode. **! IP matched before delivery, please confirm thermostat and receiver connected well and is working before matching WiFi.**
- Blue light on receiver is signal indicator, it is blinking when receive wifi matching signal.**

11

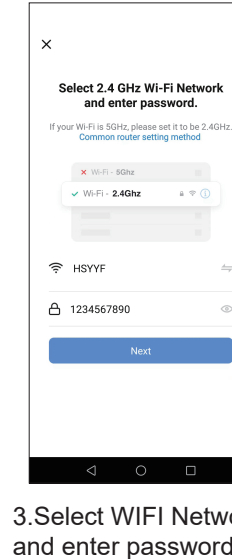
- Step 2 Register your account
- Step 3 Connect your Wi-Fi signal (EZ distribution mode)



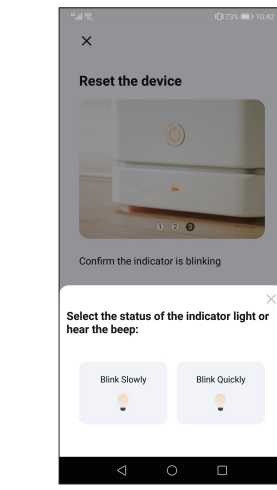
1.Add Device or '+1.

2.Select small appliance - WiFi thermostat

12

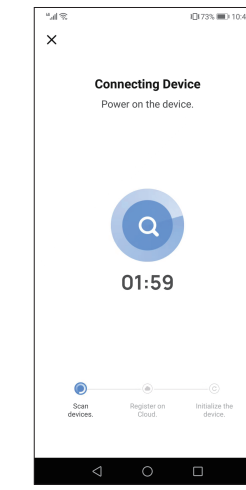


3.Select WIFI Network and enter password

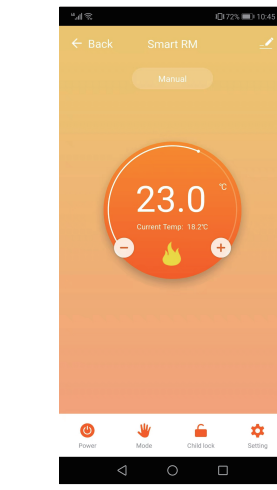


4.Confirm thermostat WiFi icon blinking

13



5.Connecting Device



6.Connected

14

Additional Functions

Holiday Mode: You can program the thermostat to be on for a set temperature for up to 30 days so that there is background heat in the house while you are away. This can be found under the mode section. You have the option to set the number of days between 1-30 and a temperature up to 27°C .
Lock Mode: This option allows you to remotely lock the thermostat so no changes can be made. This can be done by clicking the symbol. To unlock click the symbol again.
Grouping devices: You can link multiple thermostats together as a group and control them all simultaneously. This can be done by clicking on the in the top right corner and then clicking the Create Group option. If you have multiple thermostats linked it will allow you to lock each one that you want to be in the group and once you confirm the selection you will be able to name the group.

15

NO30104 V1.0